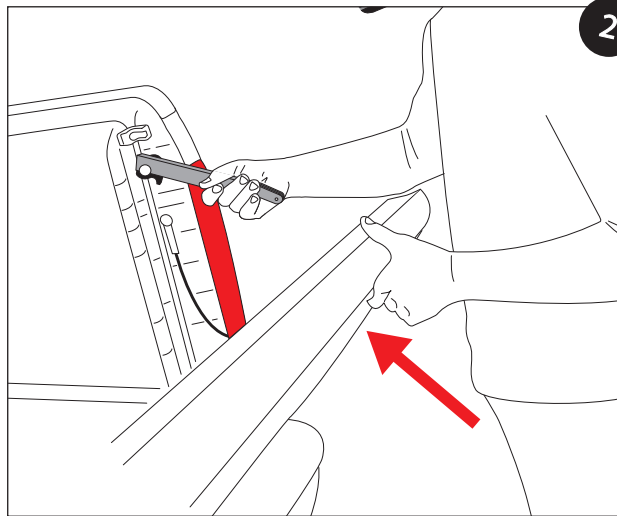
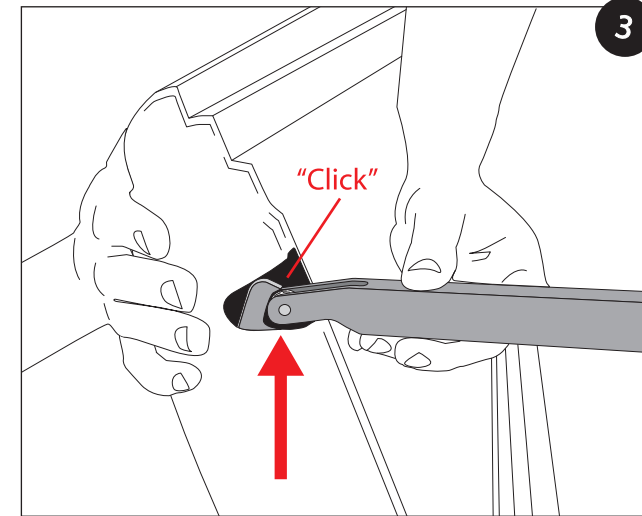


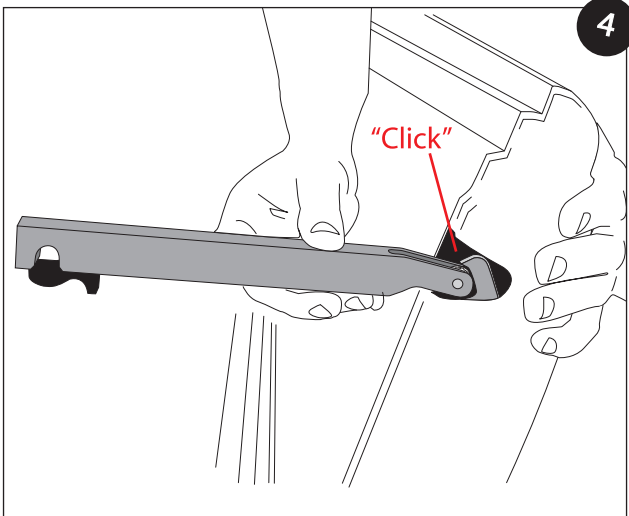
Starting with either side, attach Tailgate Latch Bar to post in truck bed. Be sure mechanism closes completely.



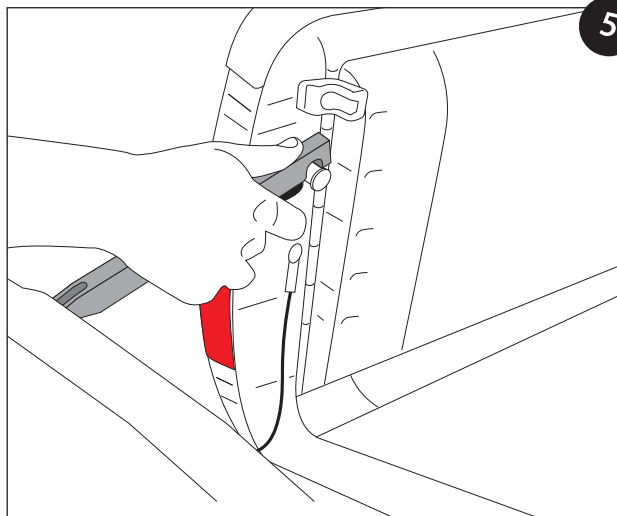
Put tailgate in position and attach the other end of the Tailgate Latch Bar to the tailgate.



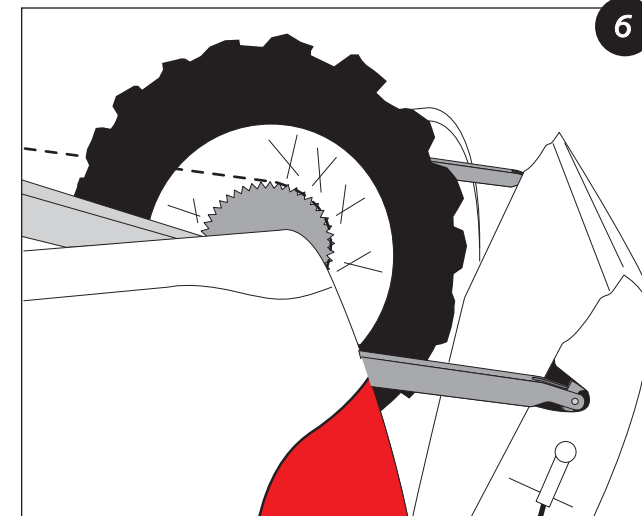
Be sure you hear an audible "click," ensuring that the Tailgate Latch Bar is fully engaged.



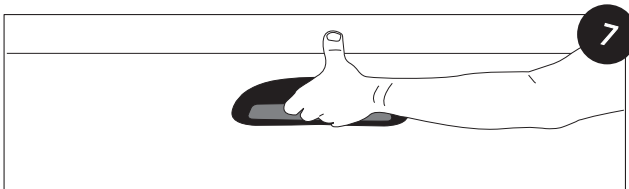
Start the other side from the tailgate. Listen for the audible "click."



Attach Tailgate Latch Bar to post in truck bed. Be sure mechanism closes completely.



Leave a minimum of 2" (50mm) between tire and tailgate. Pull on tailgate to check that it is properly secured.



Simply open tailgate to disengage.



ATTENTION!
Read before use

- Insure device and vehicle tailgate are fully engaged and closed before driving.
- This device is a positioning device only and is not intended to bear load.
- Secure truck bed contents to prevent loading of vehicle's tailgate when using this device
- Leave 2" (50mm) clearance between tailgate and the rear wheel of your motorcycle
- Vehicle Systems is not responsible for damage / injury / death when using this device

Instructions for Use
Tailgate Latch Bar

